

## Chapter 16

# Data Assimilation Research Team

### 16.1 Members

Takemasa Miyoshi (Team Leader)

Koji Terasaki (Research Scientist)

Shigenori Otsuka (Research Scientist)

Shunji Kotsuki (Research Scientist/Visiting Scientist)

Takumi Honda (Postdoctoral Researcher)

Kohei Takatama (Postdoctoral Researcher)

James Taylor (Postdoctoral Researcher)

Arata Amemiya (Postdoctoral Researcher)

Maha Mdini (Postdoctoral Researcher)

Shun Ohishi (Postdoctoral Researcher)

Hironori Arai (Postdoctoral Researcher/Visiting Scientist)

Atsushi Okazaki (Special Postdoctoral Researcher/Visiting Scientist)

Yasumitsu Maejima (Research Associate)

Hazuki Arakida (Technical Staff/Visiting Scientist)

Marimo Ohhigashi (Technical Staff)

Hideyuki Sakamoto (Technical Staff)

Kenta Kurosawa (Technical Staff)

John C. Wells (Senior Visiting Scientist)

Shu-Chih Yang (Senior Visiting Scientist)

Juan Ruiz (Visiting Scientist)

Steve Penny (Visiting Scientist)

Yohei Sawada (Visiting Scientist)

Pierre Tandeo (Visiting Scientist)

Keichi Kondo (Visiting Scientist)

Shohei Takino (Visiting Scientist)

Yanqing Shen (Intern)

Tomoki Iwakiri (Intern)

Qiwen Sun (Intern)

Shlok Mohta (Intern/Student Trainee)

Tobias Necker (Student Trainee/Research Fellow)

Cheng Da (Student Trainee)

Paula Maldonado (Student Trainee)

Yukie Komori (Assistant)

Saeko Imano (Assistant)

## 16.2 Overview of Research Activities

Data Assimilation Research Team (DA Team) was launched in October 2012 and is composed of 22 research and technical staff including 11 visiting members as of March 2020. Data assimilation is a cross-disciplinary science to synergize computer simulations and real-world data, using statistical methods and applied mathematics. As computers become more powerful and enable more precise simulations, it will become more important to compare the simulations with actual observations. DA Team performs cutting-edge research and development on advanced data assimilation methods and their wide applications, aiming to integrate computer simulations and real-world data in the wisest way. Particularly, DA Team tackles challenging problems of developing efficient and accurate data assimilation systems for “big simulations” with real-world “big data” from various sources including advanced sensors. The specific foci include 1) theoretical and algorithmic developments for efficient and accurate data assimilation, 2) data assimilation methods and applications by taking advantage of powerful supercomputers and “big data” from new advanced sensors, and 3) exploratory new applications of data assimilation in wider simulation fields. These advanced data assimilation studies will enhance simulation capabilities and lead to a better use of supercomputers including the K computer and its successor “Fugaku.”

In FY2019, we continued on the ongoing data assimilation research in the following aspects: 1) theoretical research on challenging problems, 2) leading research on meteorological applications, 3) optimization of computational algorithms, and 4) exploratory research on wider applications. We also explored close collaborations with several research teams within the R-CCS. We have made substantial progress on the following research items:

### Theoretical research

- A particle filter was applied to the cellular automata of 3 state sheep model.
- Model bias correction using a machine learning method (Long Short Term Memory, LSTM) was explored with the Lorenz96 model.
- Denial of detrimental observations based on the Ensemble Forecast Sensitivity to Observation (EFSO) was investigated (1 paper in revision).
- Weight structure of the Local Ensemble Transform Kalman Filter (LETKF) was investigated with a simplified atmospheric general circulation model (GCM) (1 paper in revision).
- A local particle filter (LPF) was developed and tested with a simplified GCM.
- An LPF was developed for GPGPU.
- Ensemble Kalman filters (EnKFs) and LPFs were compared using the Lorenz96 model.
- Reservoir computing and EnKF were combined to predict spatio-temporal chaotic systems (1 paper in preparation).

**Leading research on meteorological applications**

- A 30-second-update, real-time prediction system was developed with the SCALE-LETKF.
- The SCALE-LETKF realtime system toward a very short-term localized rainfall forecast was ported to Oakforest-PACS and tested in a realtime manner using the Multi-Parameter Phased Array Weather Radar (MP-PAWR) at Saitama University.
- The observational operator for PAWR in SCALE-LETKF was improved, and its impact on forecasts was investigated (1 paper published).
- An impact of a new observation system using a kite on a forecast of heavy rainfall was investigated.
- Impact of 30-second-update PAWR DA was investigated using the 100-m-mesh SCALE-LETKF for the west Japan heavy rainfall event in July 2018.
- An observation operator for high frequent lightning data assimilation was developed.
- Model acceleration by machine learning was investigated; convolutional neural networks were used to accelerate quasi-geostrophic model.
- To improve 3D precipitation nowcasting, neural networks were used to predict 3D radar images.
- Impact of assimilating lightning observations was investigated with the SCALE-LETKF.
- Efficient operation of water dam was investigated.
- Impact of assimilating Himawari-8 observations on precipitation events in Taiwan was investigated.
- Satellite observations at visible bands were simulated with the 1000-member SCALE-LETKF.
- Non-Gaussian PDF in DA was investigated using 1000-member, 1km-resolution assimilation experiments with assimilation windows ranging from 30 seconds to 5 minutes and assimilating PAWR observations in the SCALE-LETKF system. (1 paper in preparation)
- Conventional radar data assimilation experiments using the SCALE-LETKF system and RELAMPAGO field campaign observations. Analysis of the performance of the analysis and short range forecasts. (1 paper in preparation)
- Impact of dual phased array assimilation to severe convective weather forecasts investigated with the SCALE-LETKF was investigated.
- Sensitivity tests to optimize localization in the real-time SCALE-LETKF system were performed.
- We kept running the three-dimensional precipitation nowcasting system with the PAWR at NICT Kobe. A new system was developed for the MP-PAWR.
- A machine-learning system for the three-dimensional precipitation nowcasting system was developed with Convolutional LSTM.
- The sensitivity of a WRF-based convective-scale assimilation system on an afternoon thunderstorm in northern Taiwan was investigated (1 paper in press).
- Hybrid gain data assimilation using variational corrections in the subspace orthogonal to the ensemble was investigated (1 paper in press).
- Evaluation of stochastic perturbed parameterization tendencies on convective-permitting ensemble forecasts of heavy rainfall events in New York and Taiwan was performed (1 paper published).
- Convective-scale sampling error and its impact on the ensemble radar data assimilation system were investigated with a case study of heavy rainfall event on 16th June 2008 in Taiwan (1 paper in press).
- Impact of tropical cyclone initialization on its convection development and intensity was investigated with a case study of typhoon Megi (1 paper published).
- Convective-scale assimilation with the GNSS-ZTD and radar data was performed, and its impact on heavy rainfall prediction in Taiwan was investigated (1 paper published).
- Including the observation error correlation in DA was investigated with the NICAM-LETKF system. We found that reconditioning the observation error covariance matrix stabilizes the data assimilation and improves the analyses.
- Ensemble-based observation impact estimates was incorporated into the NICAM-LETKF (1 paper published).
- GPM/DPR-sensed heavy ice precipitation was compared with a 3.5-km NICAM simulation to design better cloud microphysics (1 paper in revision).
- We kept running the global precipitation nowcasting system with the Global Satellite Mapping of Precipitation (GSMaP) by JAXA, and the prediction was disseminated on our website and JAXA's website (1 paper published).
- Precipitation forecasts were improved by merging NICAM and spatio-temporal extrapolation forecasts (1 paper published).
- Spatially-varying model parameter was estimated with NICAM-LETKF (1 paper published).

- Survey of ensemble-covariance of CH<sub>4</sub>-emission and wind velocity with NICAM-RM-LETKF to evaluate unfavorable impacts of observation densities between PREPBUFR-wind and GOSAT-CH<sub>4</sub> data.
- An observation operator for a new space-borne precipitation radar was developed (1 paper accepted).
- Impact of oversampling observations from a geostationary precipitation radar satellite to tropical cyclone forecasts was investigated (paper to be submitted).
- An object-based verification method of precipitation pattern was investigated using pattern recognition techniques (1 paper published).
- An LETKF system to assimilate pattern features of precipitation areas was implemented with an intermediate atmospheric GCM. A feature based on the fractions skill score was investigated.
- Impact of the ocean mixed layer model in a regional atmospheric DA system was investigated for a case of typhoon Soudelor in 2015.
- Water level change in Lake Biwa under Typhoon Jebi in 2018 was reproduced by using SCALE and the Regional Ocean Modeling System (ROMS).
- Current filed in Lake Kinneret was simulated with 50-m mesh ROMS.
- A LETKF based ocean DA system was developed and tested with Argo assimilation in the western North Pacific.
- Bio-chemical fields in Tokyo-Bay are simulated to predict blue-green algae bloom.
- Relaxation methods of dynamical imbalance for ocean data assimilation systems were implemented.
- Performance of regional ocean data assimilation systems between 3D-VAR and LETKF was compared.
- Uncertainty quantification of a land surface model by machine learning based surrogate modelling was investigate (1 paper submitted).
- A prototype system of machine-learning-based dam operation optimization was developed in collaboration with Tokyo Electric Power Company Holdings, Incorporated.
- Land-atmosphere-coupled DA system was developed based on the NICAM-LETKF (1 paper in revision).
- Online- and offline-DA for paleoclimate reconstruction and its relation to the predictability were compared (1 paper in prep.).
- Observation operators for paleoclimate reconstruction were developed (1 paper accepted).

### Computational optimization

- The NICAM-LETKF system was developed for “Fugaku” as a target application in collaboration with the Computational Climate Science Research Team and FS2020 (1 application submitted to Gordon Bell).
- The just-in-time data transfer (JIT-DT) of PAWR observations from NICT and Saitama University to R-CCS was improved in collaboration with the System Software Development Team.

### Wider applications

- DA experiments were performed with the Moderate resolution Imaging Spectroradiometer (MODIS) leaf area index (LAI) observations and the Spatially-Explicit, Individual-Based Dynamic Global Vegetation Model (SEIB-DGVM) over Siberia.
- SEIB-DGVM DA experiments were performed with the MODIS LAI observations at Takayama Flux site in Japan.
- A particle filter was applied to a press-forming manufacturing simulation.

Several achievements are selected and highlighted in the next section.

## 16.3 Research Results and Achievements

### 16.3.1 Development of a real-time workflow of the big data assimilation system

In FY2019, we developed a 30-second-update, real-time prediction system assimilating the Phased Array Weather Radar (PAWR) observations by fully utilizing the Oakforest-PACS. In the previous fiscal year, we achieved a real-time execution of a 30-second-update PAWR DA cycle with a 250-m mesh on the supercomputer K. However, the computational domain was limited to the PAWR observation range of 60 km, and the boundary conditions for this domain were not provided in real time; a real-time system for the outer regions was yet to be developed. We also ported the entire system to the Oakforest-PACS in response to the upcoming shutdown of the K computer. In FY2019, we started to use the Oakforest-PACS as the main platform. Our

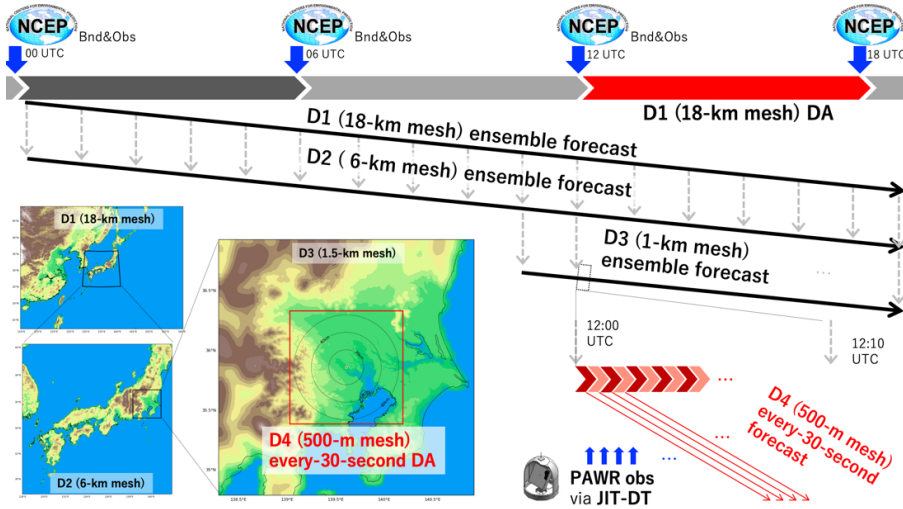


Figure 16.1: Workflow and computational domains of the 30-second-update, real-time SCALE-LETKF system.

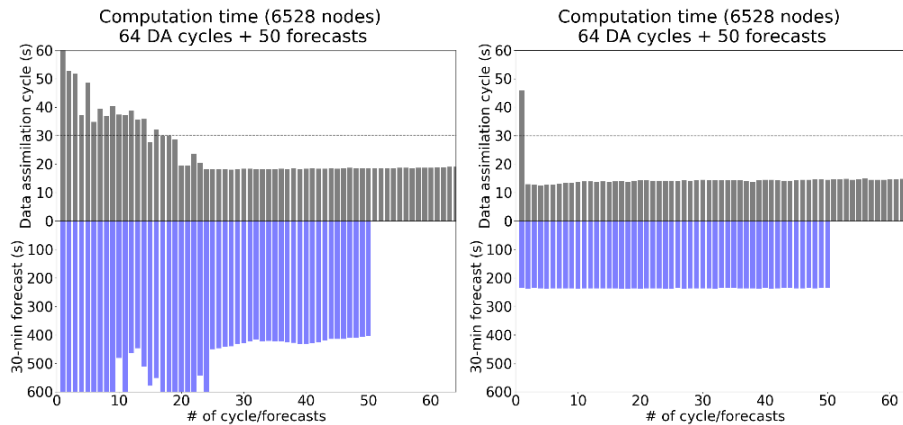


Figure 16.2: Elapse times of each DA and 30-minute forecast with a 250-m mesh. DA was performed for 64 cycles, and forecasts were performed for 50 initial conditions. Left: a test run in August 2019, right: a test run in November 2019.

system receives and assimilates PAWR observations every 30 seconds, and performs 30-minute deterministic forecasts from the analyses. Figure 16.1 presents the system design. The system consists of four computational domains. The outermost domain (D1, 18-km mesh) is the near-real-time SCALE-LETKF system developed by Lien et al. (2017), assimilating conventional observations provided by the National Center for Environmental Prediction (NCEP) every 6 hours. From the analyses by D1, ensemble forecasts over Japan (D2, 6-km mesh) and Kanto (D3, 1.5-km mesh) are performed to provide initial and boundary conditions for the innermost domain (D4). The D4 covers a region of  $120 \text{ km} \times 120 \text{ km}$  with a 500-m mesh or a 250-m mesh, assimilating observations of PAWR at Saitama University every 30 seconds. The data transfer of PAWR uses the Just-In-Time Data Transfer (JIT-DT) developed by the System Software Development Team, R-CCS.

In FY2019, the 30-minute deterministic forecasting from the analyses of D4 was implemented as follows. Here, 10 MPI processes are assigned to the 30-minute forecasts in addition to the MPI processes for the 52 ensemble members. MPI communicators are prepared for DA and the 30-minute forecasts separately; computations are independent except for the exchange of DA analyses. The SCALE and LETKF are combined as a single binary file to avoid data exchange via file IO; data are exchanged on memory. Figure 16.2 displays the execution time for DA and forecast. An earlier version of DA did not run stably in 30 seconds, and the corresponding 30-minute forecasts took long (left). The system was updated to solve these problems; the latest version runs stably within 30 seconds. The first cycle of DA takes longer to initialize the system, and from the second cycle, the DA finishes stably within 30 seconds. The 30-minute forecasts also runs in 4 minutes (right). This is a big step to the real time prediction. We will prepare a dissemination system and web page for this

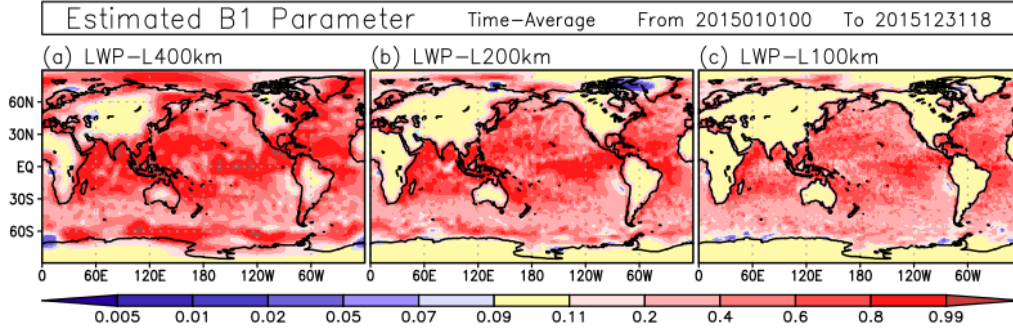


Figure 16.3: Spatial patterns of locally-estimated  $B_1$ , averaged over 12 months from January to December 2015 for the experiments with the horizontal localization scales of (a) 400, (b) 200, and (c) 100 km (LWP-L400km, LWP-L200km, and LWP-L100km, respectively). Red and blue colors indicate increases and decreases from the default value of  $B_1 = 0.10$  due to parameter estimation. Adopted from Kotsuki et al. (2020).

prediction. We also need to verify and improve the prediction accuracy.

### 16.3.2 Model parameter estimation with data assimilation using NICAM-LETKF

This study aims to improve forecasts of numerical weather prediction (NWP) models by optimizing model parameters with data assimilation. Kotsuki et al. (2018) succeeded in improving global precipitation forecasts at 112-km-resolution NICAM (Nonhydrostatic ICosahedral Atmospheric Model) by estimating a parameter called  $B_1$  of Berry (1967)’s large-scale condensation scheme using satellite-observed precipitation data and the Ensemble Transform Kalman Filter (ETKF).

Extending the previous study, this study explores to use the model parameter estimation for mitigating radiation bias. Kotsuki et al. (2020, JGR) estimated the parameter  $B_1$  as a global-constant parameter with cloud liquid water (CLW) data observed by GCOM-W/AMS2. The parameter estimation successfully reduced excessive bias in CLW, and mitigated overestimated outgoing shortwave radiation (OSR) bias of the NICAM. In addition, Kotsuki et al. (2020, JGR) extended to estimate spatially-varying  $B_1$  parameters using the Local ETKF (i.e., LETKF) (Fig. 16.3). The local parameter estimation resulted in better cloud representations and improved OSR bias in regions where shallow clouds are dominant (Fig. 16.4).

### 16.3.3 Application of machine learning methods to model bias correction: idealized experiments with the Lorenz-96 model

Model bias correction has been studied as an important subject in data assimilation. Model bias can be effectively alleviated by statistical model bias correction methods combined with a variational or sequential (Kalman filter-based) data assimilation method (Dee, 2005). Conventional methods have assumed a bias correction term of simple functional form such as a constant or a linear dependence on model state variables (Dee and Da Silva, 1998, Danforth et al., 2007). Recently, the data-driven forecast and estimation of governing functions of the system in arbitrary form, known as ‘model detection’ or ‘system identification,’ has been rapidly developed with the use of machine learning (Brunton et al. 2016, Vlachas et al. 2018). The application of such machine learning methods to data assimilation is a potential solution to model bias correction with unknown complexity.

In this study, an application of Long-Short term memory (LSTM) on model bias correction problems is explored in the context of data assimilation using the Local Ensemble Transformed Kalman Filter (LETKF). The proposed method is applicable for model bias which is dependent on current and past model states in an arbitrarily nonlinear manner. Localization of bias correction treatment is also implemented. The new method is examined by idealized numerical experiments using a multi-scale Lorenz-96 model (Lorenz 1996; Wilks 2005).

As the first step, LSTM-based scheme is examined in the case of offline bias correction, where the network is trained with the pair of forecast and analysis time sequence produced by LETKF without correction. The bias correction with LSTM worked well and showed slightly better performance than simple polynomial fitting. However, the improvement is very subtle in the case of coupled Lorenz96 system, which have been used in previous studies. Therefore, experimental settings in which the use of LSTM has a clear advantage will be studied further. Figure 16.5 presents such an example; here, the “shear-Lorenz96” by Pulido et al. (2018) is

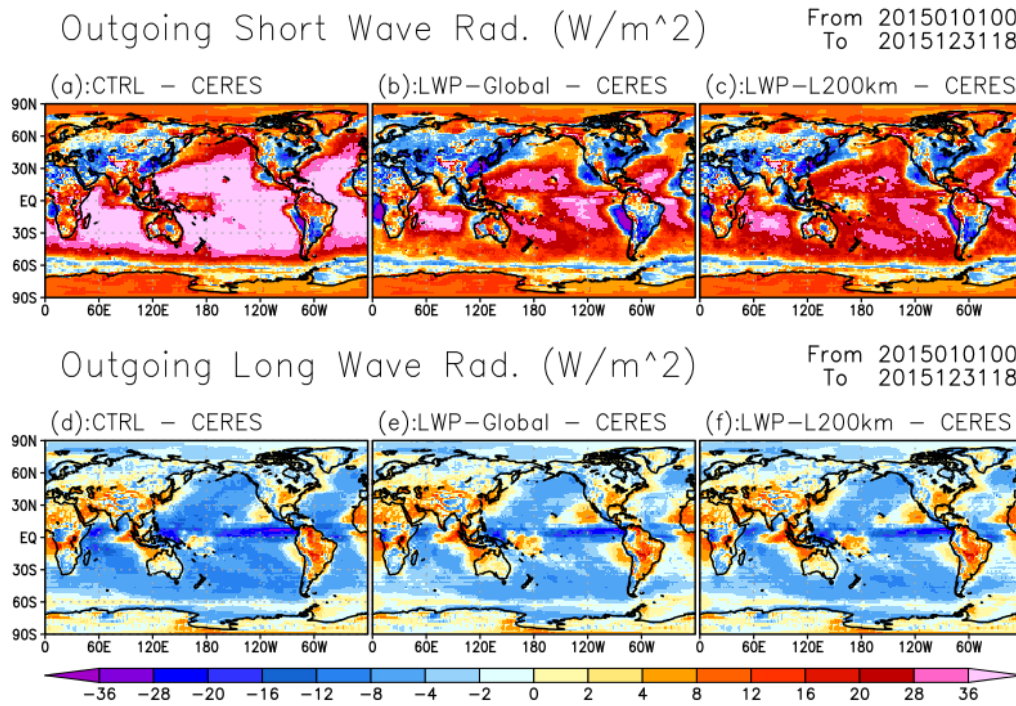


Figure 16.4: Global patterns of the time-mean bias relative to CERES data for (a, b, c) outgoing short wave radiation (OSR;  $\text{W m}^{-2}$ ), and (d, e, f) outgoing long wave radiation (OLR;  $\text{W m}^{-2}$ ), averaged over 12 months from January to December 2015. Panels (a, d), (b, e) and (c, f) show CTRL, LWP-Global (estimating  $B_1$  as a global constant), and LWP-L200km experiments, respectively. Warm (cold) color represents overestimated (underestimated) outgoing radiations relative to CERES data. Adopted from Kotsuki et al. (2020).



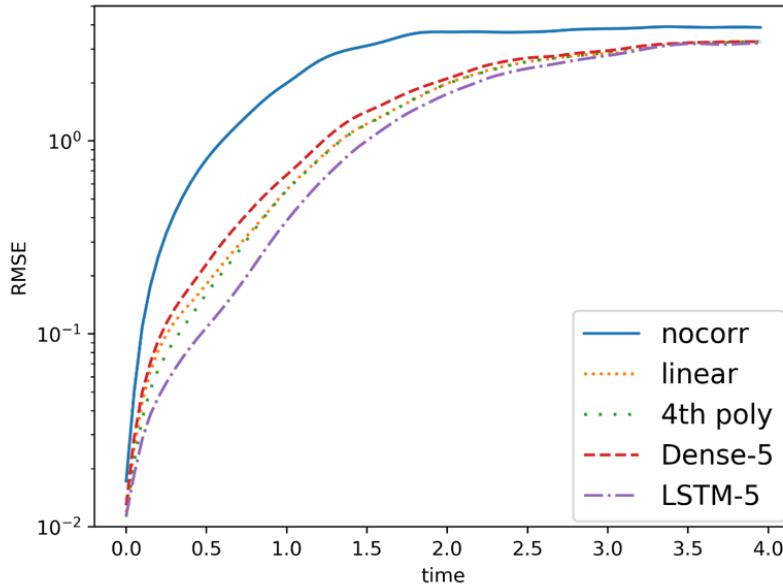


Figure 16.5: The comparison of average RMSE over 100 forecasts from different initial conditions in “shear-Lorenz96 (Pulido et al., 2018)” experiments. Each line corresponds to the experiment with different bias correction schemes; no correction, linear regression, 4th order polynomial regression, neural networks with dense layers, and LSTM. All bias correction schemes use the spatial localization with 5 neighboring grid points.

used. The next step will be the online bias correction, where the bias correction function is estimated with state variables by LETKF simultaneously, and the consideration of partial and noisy observation.

## 16.4 Schedule and Future Plan

DA Team aims to explore the frontier of large-scale DA problems, and to be a world’s leader in DA research. With the goals in mind, we plan to continue working on the three fundamental foci: 1) theoretical and algorithmic developments for efficient and accurate DA (core focus), 2) DA methods and applications by taking advantage of the Japan’s flagship supercomputer and “Big Data” from new advanced sensors (lead focus), and 3) exploratory new applications of DA in wider simulation fields (pioneer focus). We have very strong projects in weather forecast applications, and we will enhance the leading research to the world’s top level. Also, we will pioneer new application fields that have direct connection with societal benefits. For direct benefit to society, “real-time” application is essential with efficient computational algorithms, which are also an important aspect of our research.

“Big Data Assimilation” (BDA) is one of the major activities that we have developed in the past years. The prototype system showed promising results, but the physical performance for the 30-minute forecast of precipitation patterns can be improved. We will continue to work on the development of the BDA system to further improve the computational and physical performances toward the upcoming “Fugaku” era.

Beyond the direct future of the BDA effort, we can extend the idea of BDA to a broader perspective: integration of “Big Data” and “Big Simulation.” New sensors provide orders of magnitude more data, and simulations become more precise. Collaborative work with computer scientists will be essential to utilize the complex high-performance computer systems effectively. In addition, dense sensor data tend to have complicated error structures such as correlated errors, and the proper treatment is necessary to fully utilize the “Big Data.” The current DA methods usually assume no observation error correlation. Based on our previous theoretical research on the observation-error correlations, we plan to develop methods to consider the observation error correlations in realistic NWP applications.

Treating the model errors and non-Gaussian probability distribution has been grand challenges in DA. “Big Ensemble Data Assimilation” with the largest-ever 10240 samples was a milestone providing fundamental



data to investigate the non-Gaussian probability distribution. We have developed expertise and exclusive dataset to tackle these challenges. We have been pioneering a new implementation of Local Particle Filter (LPF) in collaboration with German Weather Service. We will continue the LPF development toward realistic applications.

DA is a cross-disciplinary science based on statistical mathematics and dynamical systems theory. In addition, DA connects simulations and real-world data. Therefore, it is naturally beneficial to enhance close collaborations with experts in mathematics, sensor technology, and various application fields. The current weather-forecast projects involve active collaborations with observation experts. In addition, we have been teaching semester-long courses on DA at the Department of Mathematics, Kyoto University, and this will lead to more collaborations with mathematicians. Moreover, TL Miyoshi has joint appointments at RIKEN iTHEMS (Interdisciplinary Theoretical and Mathematical Sciences Program) and RIKEN CPR (Cluster for Pioneering Research), and these will enhance broader collaborations. Collaborations with other R-CCS Research Teams will also be beneficial. The challenges for future DA systems require cross-disciplinary collaborations to most effectively use the massive supercomputers with more heterogeneous architecture design. Further, RIKEN's Engineering Network already gave us opportunities to collaborate among different disciplines among RIKEN centers. RIKEN President's Initiative for "DA innovation hub" also helped expand collaboration. We also started collaborations with industry partners for more direct benefit to society. Enhancing the broader collaborations is a key to success, i.e., to make a new scientific movement across the borders through DA as an innovation hub, to establish DA as a new scientific paradigm, and to change the world through innovation and education of DA.

## 16.5 Publications

### 16.5.1 Awards

- [1] Shigenori Otsuka, RIKEN Oubu Research Incentive Award, Development of a novel three-dimensional precipitation nowcast method and its real-time demonstration, 3/10/2020.

### 16.5.2 Articles

- [1] Takino, S., T. Honda, T. Miyoshi, and T. Tsukada 2019: Improving prediction of river-basin precipitation by assimilating every-10-minute all-sky Himawari-8 infrared satellite radiances – A case of Typhoon Malakas (2016). International Commission On Large Dams 2019 Symposium Proceedings, Volume 2, p339, ISBN:978-0-367-33422-2.
- [2] Kotsuki, S., K. Kurosawa, S. Otsuka, K. Terasaki, and T. Miyoshi, 2019: Global precipitation forecasts by merging extrapolation-based nowcast and numerical weather prediction with locally optimized weights. *Wea. Forecasting*, **34**, 701–714, <https://doi.org/10.1175/WAF-D-18-0164.1>.
- [3] 滝野晶平, 本田匠, 三好建正, 塚田智之, 2019: 10分毎のひまわり8号赤外輝度温度観測のデータ同化による流域雨量予測の改善-2016年9月台風16号の事例, 大ダム, **248**, 79–82, ISSN0011-5347.
- [4] Okazaki, A., T. Honda, S. Kotsuki, M. Yamaji, T. Kubota, R. Oki, T. Iguchi, and T. Miyoshi, 2019: Simulating precipitation radar observations from a geostationary satellite. *Atmos. Meas. Tech.*, **12**, 3985–3996, <https://doi.org/10.5194/amt-12-3985-2019>.
- [5] Kotsuki, S., K. Kurosawa, and T. Miyoshi, 2019: On the properties of ensemble forecast sensitivity to observations. *Quart. J. Royal Meteorol. Soc.*, **145**, 1897–1914, <https://doi.org/10.1002/qj.3534>.
- [6] Kondo, K., and T. Miyoshi, 2019: Non-Gaussian statistics in global atmospheric dynamics: a study with a 10240-member ensemble Kalman filter using an intermediate atmospheric general circulation model. *Nolin. Processes Geophys.*, **26**, 211–225, <https://doi.org/10.5194/npg-26-211-2019>.
- [7] Okazaki, A. and K. Yoshimura, 2019: Global evaluation of proxy system models for stable water isotopes with realistic atmospheric forcing. *J. Geophys. Res. Atmos.*, **124**, 8972–8993, <https://doi.org/10.1029/2018JD029463>.
- [8] Kurosawa, K., Y. Uchiyama, and T. Kosako, 2020: Development of a numerical marine weather routing system for coastal and marginal seas using regional oceanic and atmospheric simulations. *Ocean Engineering*, **195**, 106706, ISSN 0029-8018, <https://doi.org/10.1016/j.oceaneng.2019.106706>.

- [9] Greybush, S. G., E. Kalnay, R. J. Wilson, R. N. Hoffman, T. Nehr Korn, M. Leidner, J. Eluszkiewicz, H. E. Gillespie, M. Wespetal, Y. Zhao, M. Hoffman, P. Dudas, T. McConnochie, A. Kleinböhl, D. Kass, D. McCleese, and T. Miyoshi, 2019: The ensemble Mars atmosphere reanalysis system (EMARS) Version 1.0, *Geoscience Data Journal*, **6**, 137–150, <https://doi.org/10.1002/gdj3.77>.
- [10] Awazu, T., S. Otsuka, and T. Miyoshi, 2019: Verification of precipitation forecast by pattern recognition, *J. Meteorol. Soc. Japan Ser. II*, **97**, 1173–1189, <https://doi.org/10.2151/jmsj.2019-066>.
- [11] 庄司悟, 岡崎淳史, 芳村圭, 2018: 気候プロキシデータ同化における観測インパクトの時空間偏在性に関する考察, 土木学会論文集B1(水工学), **74**, I.49–I.54, Online ISSN 2185-467X, [https://doi.org/10.2208/jscejhe.74.5\\_I\\_49](https://doi.org/10.2208/jscejhe.74.5_I_49).
- [12] Otsuka, S., S. Kotsuki, M. Ohhigashi, and T. Miyoshi, 2019: GSMap RIKEN Nowcast: Global precipitation nowcasting with data assimilation. *J. Meteorol. Soc. Japan Ser. II*, **97**, 1099–1117, <https://doi.org/10.2151/jmsj.2019-061>.
- [13] Kotsuki, S., Y. Sato, and T. Miyoshi, 2020: Data assimilation for climate research: Model parameter estimation of large-scale condensation scheme. *J. Geophys. Res. Atmos.*, **125**, e2019JD031304, <https://doi.org/10.1029/2019JD031304>.
- [14] Necker, T., S. Geiss, M. Weissmann, J. Ruiz, T. Miyoshi, and G.-Y. Lien, 2020: A convective-scale 1,000-member ensemble simulation and potential applications. *Quart. J. Royal Meteorol. Soc.*, **148**, 1423–1442, <https://doi.org/10.1002/qj.3744>.
- [15] Chang, Y., S. Yang, K. Lin, G. Lien, and C. Wu, 2020: Impact of tropical cyclone initialization on its convection development and intensity: a case study of typhoon Megi (2010). *J. Atmos. Sci.*, **77**, 443–464, <https://doi.org/10.1175/JAS-D-19-0058.1>.
- [16] Amemiya, A., T. Honda, and T. Miyoshi, 2020: Improving the observation operator for the Phased Array Weather Radar in the SCALE-LETKF system, *SOLA*, **16**, 6–11, <http://dx.doi.org/10.2151/sola.2020-002>.
- [17] Maejima, Y. and T. Miyoshi, 2020: Impact of the window length of four-dimensional local ensemble transform Kalman filter: a case of convective rain event, *SOLA*, **16**, 37–41, <https://doi.org/10.2151/sola.2020-007>.
- [18] Yang, S., Z. Huang, C. Huang, C. Tsai, and T. Yeh, 2020: A case study on the impact of ensemble data assimilation with GNSS-zenith total delay and radar data on heavy rainfall prediction. *Mon. Wea. Rev.*, **148**, 1075–1098, <https://doi.org/10.1175/MWR-D-18-0418.1>.
- [19] Necker, T., M. Weissmann, Y. Ruckstuhl, J. Anderson, and T. Miyoshi, 2020: Sampling error correction evaluated using a convective-scale 1000-member ensemble. *Mon. Wea. Rev.*, **148**, 1229–1249, <http://doi:10.1175/MWR-D-19-0154.1>.

### 16.5.3 Invited Talks

- [1] Kotsuki S., Sato Y., Terasaki K., Yashiro H., Tomita H., Satoh M., and Miyoshi T.: Model Parameter Estimation with Data Assimilation using NICAM-LETKF. JpGU2019, Chiba, 5/29/2019.
- [2] Arakida, H., S. Kotsuki, S. Otsuka, Y. Sawada, T. Miyoshi, Data assimilation experiments with MODIS LAI observations and the dynamic global vegetation model SEIB-DGVM over Siberia, JpGU2019, Chiba, 5/29/2019.
- [3] Takemasa Miyoshi, Big data assimilation: A new science for weather prediction and beyond, 14TH INTERNATIONAL EnKF WORKSHOP IN VOSS, PARK HOTEL VOSSEVANGEN, VOSS, NORWAY, 6/4/2019.
- [4] Takemasa Miyoshi, Big Data Assimilation: A New Science for Weather Prediction and Beyond, Seminar, DWD, Frankfurt, Germany, 6/13/2019.
- [5] Takemasa Miyoshi, Big Data Assimilation: A New Science for Weather Prediction and Beyond, Seminar, LMU, Munich, Germany, 6/17/2019.

- [6] 三好建正、ビッグデータ同化：数値天気予報から予測科学へ、講演会（ショートセミナー）、日本工営株式会社、つくば、7/4/2019.
- [7] 三好建正、ビッグデータ同化：数値天気予報から予測科学へ、社内講演会、株式会社先端力学シミュレーション研究所東京事業所、東京、7/5/2019.
- [8] Takemasa Miyoshi, HPC challenges in numerical climate simulation and weather prediction, INTERNATIONAL HPC SUMMER SCHOOL 2019, R-CCS, Kobe, Japan, 7/10/2019.
- [9] 小槻峻司, 三好建正: 全球大気データ同化システムによる天気予報研究の最前線. 第14回名工大・核融合研合同セミナー、名古屋、7/18/2019.
- [10] Takemasa Miyoshi, “Big Data Assimilation A New Science for Weather Prediction and Beyond”, 6th CREST “Big Data Application” Camp for Researchers, Kanagawa, Japan, 9/26/2019.
- [11] 三好建正、ビッグデータ同化：数値天気予報から予測科学へ、通信技術部会電波センサ専門部会講演会、三菱電機株式会社、尼崎、10/3/2019.
- [12] Takemasa Miyoshi, Big Data Assimilation Incorporating Deep Learning with Phased Array Radar Data and Numerical Weather Prediction, BDEC2 San Diego, San Diego, USA, 10/16/2019.
- [13] 三好建正、ビッグデータ同化：「富岳」が拓く未来の天気予報、スーパーコンピュータ推進議員連盟総会、自民党本部、東京、10/28/2019.
- [14] 三好建正、気象予報におけるビッグデータ同化とAIの協働に向けて、第6回「京」を中核とするHPCIシステム利用研究課題成果報告会、東京、11/1/2019.
- [15] 大塚成徳・三好建正: データ同化技術について、HPCを活用した自動車用次世代CAEコンソーシアム第5回総会 基調講演、神戸、11/5/2019.
- [16] 三好建正、データ同化研究～ゲリラ豪雨予測から、予測科学へ～、精華寿大学第5回講座、精華町、京都、11/8/2019.
- [17] Takemasa Miyoshi, Big Data Assimilation: 30-second-update Weather Forecasting and Perspectives toward DA-AI Integration, Big Data, Data Assimilation and Uncertainty Quantification, Institut Henri Poincaré, Paris, France, 11/12/2019.
- [18] 三好建正、ビッグデータ同化 ゲリラ豪雨予測から、予測科学へ、セミナー、独立行政法人酒類総合研究所、東広島、11/20/2019.
- [19] Takemasa Miyoshi, Big Data Assimilation: A New Science for Weather Prediction and Beyond, seminar, ACADEMIA SINICA, Taipei, Taiwan, 11/27/2019.
- [20] Takemasa Miyoshi, Big Data Assimilation: A New Science for Weather Prediction and Beyond, seminar, National Taiwan University, Taipei, Taiwan, 11/28/2019.
- [21] 大塚成徳・三好建正: 最先端の気象予測技術：ゲリラ豪雨予測の実現に向けて、第45回（2019年度第2回）スーパーコンピューティング技術産業応用協議会セミナー、東京、11/29/2019.
- [22] Takemasa Miyoshi, Big Data Assimilation: A New Science for Weather Prediction and Beyond, seminar, National Central University, Taoyuan City, Taiwan, 11/29/2019.
- [23] Otsuka, S. and T. Miyoshi: Overview of the rapid-update weather forecasting with the phased-array weather radar, 2019 6th KNU CARE Workshop on Phase array radar and Nowcasting, Daegu, Korea, 12/5/2019.
- [24] Otsuka, S., M. Ohhigashi, and T. Miyoshi: Three-dimensional precipitation nowcasting with the phased-array weather radar, 2019 6th KNU CARE Workshop on Phase array radar and Nowcasting, Daegu, Korea, 12/5/2019.
- [25] 大塚成徳・三好建正, 簡単モデルを用いたデータ同化, CREST「ビッグデータ応用」第7回若手研究者合宿、葉山、1/16/2020.

- [26] 三好建正、ビッグデータ同化：「富岳」が拓く未来の天気予報、スーパーコンピュータ「富岳」を知る集い金沢、金沢歌劇座、金沢、1/25/2020.
- [27] 三好建正、ビッグデータ同化：ゲリラ豪雨予測から予測科学へ、CCSE ワークショップ、東海村産業・情報プラザ、東海村、2/21/2020.
- [28] 三好建正、「ビッグデータ同化」研究の最前線ゲリラ豪雨や台風の予測から、その先の予測科学へ、データマネジメント2020、東京、3/5/2020.

#### 16.5.4 Oral Presentations

- [1] Takemasa Miyoshi, Shigenori Otsuka, Takumi Honda, Guo-Yuan Lien, Yasumitsu Maejima, Yoshito Yoshizaki, Hiromu Seko, Hirofumi Tomita, Shinsuke Satoh, Tomoo Ushio, Tatiana V. Martsinkevich, Balazs Gerofi, and Yutaka Ishikawa, Big Data Assimilation: Past 5 Years and Perspectives for the Future, EGU2019, Vienna, Austria, 4/8/2019.
- [2] Takemasa Miyoshi, Shunji Kotsuki, Koji Terasaki, Kenta Kurosawa, Shigenori Otsuka, Kaya Kanemaru, Hisashi Yashiro, Masaki Satoh, Hirofumi Tomita, Kozo Okamoto, and Eugenia Kalnay, Enhancing Data Assimilation of GPM Observations: Past 6 Years and Future Plans, EGU2019, Vienna, Austria, 4/9/2019.
- [3] Takemasa Miyoshi, Big Data Assimilation: A New Science for Weather Prediction and Beyond, Japan – Israel meeting, Otsu, Japan, 4/14/2019.
- [4] Takatama, K., S. Kotsuki, K. Kurosawa, T. Miyoshi, and Y. Uchiyama: Progress on simulation research for Tokyo Bay and Lake Biwa using ROMS, SICORP Research Meeting, Shiga, Japan, 4/14/2019.
- [5] 岡崎淳史、本田匠、小槻峻司、James Taylor、三好建正、静止衛星による降水観測が台風予測に与えるインパクト評価、データ同化手法を活用した観測システムの影響評価に関する研究会、横浜、4/18/2019.
- [6] 小槻峻司、黒澤賢太、三好建正: Observation Diagnostics with NICAM-LETKF. データ同化手法を活用した観測システムの影響評価に関する研究会、横浜、4/18/2019.
- [7] 寺崎康児、三好建正、NICAM-LETKFの概要と観測誤差相関を考慮したデータ同化、データ同化手法を活用した観測システムの影響評価に関する研究会、横浜、4/18/2019.
- [8] 大塚成徳・栗津妙華・三好建正・Roland Potthast・Christian Welzbacher: Fractions Skill Scoreを用いたデータ同化、データ同化手法を活用した観測システムの影響評価に関する研究会、横浜、4/18/2019.
- [9] 雨宮新、本田匠、三好建正、SCALE-LETKFのフェーズドアレイ気象レーダのデータ同化における観測演算子の改善のインパクト、データ同化手法を活用した観測システムの影響評価に関する研究会、横浜、4/19/2019.
- [10] 本田匠、三好建正、SCALE-LETKFの概要と衛星観測同化への適用例、データ同化手法を活用した観測システムの影響評価に関する研究会、横浜、4/19/2019.
- [11] 三好 建正, Enhancing Precipitation Prediction Algorithm by Data Assimilation of GPM Observations, 「NICAM-LETKFと衛星観測データ同化に関する打ち合わせ」第17回会合、神戸、4/22/2019.
- [12] 菊地淳, 三好建正, 伊藤研悟, 高玉孝平, “海を耕す”新時代を創生する環境診断・予測技術の構築, エンジニアリングネットワーククリトリート2019, 和光, 4/23/2019.
- [13] 小槻峻司, 三好建正: Local Particle Filter: 低解像度全球大気モデルSPEEDY数値実験. 第10回 理研・京大データ同化研究会, 神戸, 4/26/2019.
- [14] 三好建正、非ガウスフィルタの実装理論：LETKFからLPFへ、第10回理研・京大データ同化研究会、神戸、4/26/2019.
- [15] 岡崎淳史、本田匠、小槻峻司、三好建正、次世代静止衛星搭載降水レーダ反射強度の観測システムシミュレーション実験、日本気象学会2019年度春季大会、東京、5/17/2019.
- [16] 前島康光、大塚成徳、三好建正 平成30年7月豪雨を対象とした高頻度・高解像度フェーズドアレイ気象レーダーデータ同化実験、日本気象学会2019年度春季大会、東京、5/18/2019.

- [17] Arakida, H., S. Kotsuki, S. Otsuka, and T. Miyoshi, Data assimilation experiments with MODIS LAI observation and the dynamic global vegetation model SEIB-DGVM in Japan, JPGU2019, Chiba, Japan , 5/28/2019.
- [18] Okazaki, A., Isotope-enabled climate modeling and simulations: state of the art, next steps, Data Assimilation, Reanalyses and Proxy System Modeling in Paleoenvironmental Science, UMD, US., 5/29/2019.
- [19] Amemiya, A., T. Honda, and T. Miyoshi, Improving the observation operator for Phased Array Weather Radar in the SCALE-LETKF system, JPGU2019, Chiba, Japan , 5/29/2019.
- [20] Koji Terasaki and Takemasa Miyoshi, Data assimilation and forecast experiments for the record-breaking rainfall event in Japan in July 2018 with NICAM-LETKF at 112-km and 28-km resolution, JPGU2019, Chiba, Japan, 5/29/2019.
- [21] Takatama, K., T. Honda, T. Miyoshi. Regional atmospheric data assimilation coupled with an ocean mixed layer model: a case of typhoon Soudelor (2015), JPGU2019, Chiba, Japan , 5/29/2019.
- [22] 三好 建正、小槻 峻司、寺崎 康児、大塚 成徳、本田 匠、岡崎 淳史、高玉 孝平、「 気象・海洋・陸面予測を革新する高頻度衛星観測網の設計事前評価プラットフォーム」、JpGU、千葉, 5/29/2019.
- [23] Kotsuki S., Terasaki K., and Miyoshi T.: Ensemble-Based Data Assimilation of GPM/DPR Reflectivity into the Nonhydrostatic Icosahedral Atmospheric Model NICAM. JPGU2019, Chiba, Japan , 5/30/2019.
- [24] 高玉 孝平、小槻峻司、黒澤賢太、三好建正、内山雄介: “ROMS による東京湾の数値シミュレーション”, 第1回理研-水研機構研究情報交換会 , 5/30/2019.
- [25] Hironori Arai, Development of Monitoring, Reporting and Verification system of Methane emisisions from rice paddies in the Mekong delta, 15th International Workshop of Greenhouse Gas Measuremetns from Space, Sapporo, 6/5/2019.
- [26] 三好建正、Local Gaussian Mixture Particle Filter (LMCPF)の紹介、2019年度第1回高解像度豪雨予測とアンサンブル同化摂動手法に関する研究会（第7回アンサンブルデータ同化摂動に関する研究会）、苫小牧, 6/28/2019.
- [27] 坂本英之、三好建正、プレスシミュレーションにおけるデータ同化（続編）、第四回ものづくりワークショップ: データ駆動型社会におけるものづくり設計の新潮流, 日本橋 ライフサイエンスハブ, 7/10/2019.
- [28] Takemasa Miyoshi, Advancing data assimilation as a science hub: from weather forecasting and beyond, ICIAM2019, University of Valencia, Valencia, Spain, 7/17/2019.
- [29] Arai, H., W.Takeuchi, K.Oyoshi, L.D. Nguyen, T.Tachibana, R.Uozumi, K.Terasaki, T.Miyoshi, H.Yashiro and K.Inubushi. Evaluation of methane emission status from tropical rice paddies with optical and SAR imagery and validation scheme using GHG observation data. Land cover/land use changes and impacts on environment in south/southeast asia – international regional science meeting, Johor Bahru, Malaysia, 7/22/2019.
- [30] Takemasa Miyoshi, Big Data Assimilation: Past 5 Years and Perspectives for the Future, AOGS, Singapore, 7/30/2019.
- [31] Takemasa Miyoshi, Enhancing Data Assimilation of GPM Observations: Past 6 Years and Future Plans, AOGS, Singapore, 8/2/2019.
- [32] 寺崎康児, 三好建正: NICAM-LETKFを用いた観測誤差相関を考慮するデータ同化システムの開発. 第3回 理研・気象庁データ同化研究会, 東京, 8/20/2019.
- [33] 三好建正、LETKFと融和的な粒子フィルタ実装方法について、第3回理研・気象庁 データ同化に関する情報交換会、気象庁, 8/20/2019.
- [34] Takemasa Miyoshi, Big Data Assimilation: A New Science for Weather Prediction and Beyond, Seminar, CIMA, Buenos Aires, Argentina, 8/26/2019.
- [35] 三好建正、GPM観測データ同化による降水予測アルゴリズムの高度化、2019年度 第二回地球観測研究公募 降水観測ミッション サイエンスチーム国内キックオフ会合、東京, 9/5/2019.

- [36] Takemasa Miyoshi, Shigenori Otsuka, Takumi Honda, Guo-Yuan Lien, Yasumitsu Maejima, Marimo Ohhigashi, Yoshito Yoshizaki, Hiromu Seko, Hirofumi Tomita, Shinsuke Satoh, Tomoo Ushio, Balazs Gerofi, Yutaka shikawa, Naonori Ueda, Kana Koike, Yasuhiko Nakada, Big Data Assimilation: Past 6 Years and Future Plans, 39th International Conference on Radar Meteorology, Nara, Japan, 9/17/2019.
- [37] 三好 建正, Enhancing Precipitation Prediction Algorithm by Data Assimilation of GPM Observations, 「NICAM-LETKFと衛星観測データ同化に関する打ち合わせ」第18回会合, 奈良, 9/18/2019.
- [38] Okazaki, A., Honda, T., Kotsuki, S., Taylor, J., Miyoshi, T., Impact assessment of Next Generation Rainfall Measuring Satellite on NWP: An Observation System Simulation Experiment for a typhoon case, 39th International Conference on Radar Meteorology, Nara, Japan, 9/19/2019.
- [39] 雨宮新、三好建正、雲微物理パラメタに依存するレーダー反射因子の観測演算子とパラメタ推定への展望、ポスト京重点課題4サブ課題A研究連絡会、東京, 9/25/2019.
- [40] Takemasa Miyoshi, Big Data Assimilation and AI Creating New Development in Real-time Weather Prediction (AIP Acceleration Research), CREST Symposium on Big Data Application, Tokyo, Japan, 9/25/2019.
- [41] 小槻峻司, 三好建正: 低解像度全球大気モデルを用いた局所粒子フィルタ実験. 日本気象学会2019年度秋季大会, 福岡, 10/28/2019.
- [42] 黒澤賢太, 小槻峻司, 三好建正: 全球大気・水文結合データ同化システムの開発と土壌水分データ同化実験. 日本気象学会2019年度秋季大会, 福岡, 10/28/2019.
- [43] 小槻峻司, 三好建正: 低解像度全球大気モデルを用いた局所粒子フィルタ実験. 日本気象学会2019年度秋季大会, 福岡, 10/28/2019.
- [44] 黒澤賢太, 小槻峻司, 三好建正: 全球大気・水文結合データ同化システムの開発と土壌水分データ同化実験. 日本気象学会2019年度秋季大会, 福岡, 10/28/2019.
- [45] 近藤圭一、三好建正、背景誤差の非ガウス分布を考慮したアンサンブル同化手法、日本気象学会2019年度秋季大会、福岡, 10/28/2019.
- [46] 大塚成徳, Viet Phi Huynh, 大東真利茂, Pierre Tandeo, 三好建正, 深層学習による三次元降水ナウキャスト手法の検討, 日本気象学会2019年度秋季大会, 福岡, 10/30/2019.
- [47] 雨宮新, 三好建正, Shlok Mohta, 機械学習によるモデルバイアス補正: Lorenz96 モデル実験, 日本気象学会秋季大会, 福岡, 10/30/2019.
- [48] 澤田洋平, データ駆動型アプローチが加速する地球科学シミュレーションの不確実性定量化, 日本気象学会秋季大会, 福岡, 10/30/2019.
- [49] 三好建正、気象学における AI 活用から AI 統合へ、日本気象学会2019年度秋季大会、福岡, 10/30/2019.
- [50] Honda, T., Y. Sato, T. Miyoshi, Exploring the potential of assimilating three-dimensional lightning discharge observations with an ensemble Kalman filter , European Conferences on Severe Storms (ECSS), Krakow, Poland, 11/7/2019.
- [51] 坂本 英之, 三好 建正, 高村 正人, 見原 俊介, 第6回設計に活かすデータ同化研究会, プレスシミュレーションにおけるデータ同化, 鳥取, 11/11/2019.
- [52] 雨宮新, 本田匠, 三好建正, SCALE-LETKFのフェーズドアレイ気象レーダのデータ同化における観測演算子の改善のインパクト, 第21回非静力学モデルワークショップ, 三重, 11/21/2019.
- [53] 寺崎康児、小槻峻司、三好建正: GSMaP降水データの観測誤差相関を考慮したデータ同化実験、第21回非静力学モデルに関するワークショップ、三重, 11/21/2019.
- [54] 三好建正、小槻峻司、Roland Potthast、LETKFに基づいた局所粒子フィルタの簡易実装法の検討、第21回非静力学モデルに関するワークショップ、三重, 11/21/2019.
- [55] 本田匠、佐藤陽祐、三好建正, SCALE-LETKF を用いた雷観測データ同化: 観測システムシミュレーション実験, 第21回非静力学モデルに関するワークショップ, 三重, 11/22/2019.

- [56] 三好建正、局所粒子フィルタの進展、2019年度第2回高解像度豪雨予測とアンサンブル同化摂動手法に関する研究会（第8回アンサンブルデータ同化摂動に関する研究会）、大洲市民会館、大洲、12/5/2019.
- [57] Takemasa Miyoshi, Local Particle Filter Implemented with Minor Modifications to the LETKF Code, AGU FALL MEETING, Moscone Center, San Francisco, USA, 12/9/2019.
- [58] Sawada, Y., Machine learning accelerates parameter optimization and uncertainty quantification of a land surface model, AGU Fall Meeting, San Francisco, USA, 12/9/2019.
- [59] Takemasa Miyoshi, Big Data Assimilation Incorporating Deep Learning with Phased Array Radar Data and Numerical Weather Prediction, AGU FALL MEETING, San Francisco, USA, 12/10/2019.
- [60] 雨宮新, 佐藤薫, アジアモンスーン高気圧（チベット高気圧）の形成と季節内変動の力学, 第2回高・低気圧ワークショップ, 京都大学防災研究所白浜海象観測所, 和歌山, 12/17/2019.
- [61] 三好建正、ビッグデータ同化とAIによるリアルタイム気象予測の新展開、ビッグデータ基盤/応用 合同領域会議、湯河原, 12/18/2019.
- [62] 三好 建正, “Enhancing Precipitation Prediction Algorithm by Data Assimilation of GPM Observations”, 「NICAM-LETKFと衛星観測データ同化に関する打ち合わせ」第19回会合, 理研R-CCS、神戸, 12/20/2019.
- [63] 大塚成徳・三好建正: LSTMによる三次元降水ナウキャスト手法, 第11回理研・京大データ同化研究会, 京都, 12/24/2019.
- [64] 雨宮新, 三好建正, Shlok Mohta, 機械学習によるモデルバイアス補正: Lorenz96 モデル実験, 第11回理研・京大データ同化研究会, 京都, 12/24/2019.
- [65] Takemasa Miyoshi, “Big Data Assimilation: Real-Time Workflow for 30-Second-Update Forecasting and Perspectives Toward DA-AI Integration”, AMS 100th Annual Meeting, Boston, USA, 1/13/2020.
- [66] T. Miyoshi, S. Otsuka, H. Tomita, B. Gerofi, S. Satoh, Big Data Assimilation and AI Creating New Development in Real-time Weather Prediction. CREST International Symposium on Big Data Application, Tokyo, 1/13/2020.
- [67] 寺崎康児、三好建正、ビッグデータ同化に向けた観測誤差相関を考慮するデータ同化、NICAM開発者会議、沼津, 1/16/2020.
- [68] Takemasa Miyoshi, Enhancing Precipitation Prediction Algorithm by Data Assimilation of GPM Observations, The Joint PI Meeting of JAXA Earth Observation Missions FY2019, Tokyo, Japan, 1/24/2020.
- [69] 雨宮新、三好建正、Shlok Mohta, Application of machine learning methods to model bias correction: Lorenz-96 model experiments, 第10回データ同化ワークショップ、横浜, 1/30/2020.
- [70] 寺崎康児、三好建正、ビッグデータ同化に向けた観測誤差相関を考慮するデータ同化、ポスト京重点課題4成果報告会、東京, 1/31/2020.
- [71] Koji Terasaki and Takemasa Miyoshi, Accounting for the horizontal observation error correlation of satellite radiances in data assimilation, The Second IMT-Atlantique & RIKEN Joint Workshop, Brest, France, 2/10/2020.
- [72] Amemiya, A., T. Miyoshi, and M. Shlok, Application of machine learning methods to model bias correction: Lorenz-96 model experiments, The Second IMT-Atlantique & RIKEN Joint Workshop, Brest, France, 2/10/2020.
- [73] Shigenori Otsuka, Yasumitsu Maejima, and Takemasa Miyoshi, Toward hybrid NWP-AI system for precipitation nowcasting, The Second IMT-Atlantique & RIKEN Joint Workshop, Brest, France, 2/10/2020.
- [74] Maha Mdini, Toward model acceleration by ML, The Second IMT-Atlantique & RIKEN Joint Workshop: Statistical Modeling and Machine Learning in Meteorology and Oceanography, Brest, France, 2/10/2020.
- [75] Takemasa Miyoshi, Big Data Assimilation in Weather Prediction: From K to Fugaku, The 2nd R-CCS International Symposium, Kobe, Japan, 2/17/2020.



- [76] 三好建正、ビッグデータ同化による次世代気象予測、理研エンジニアリングネットワーク「気象予測データを再現する人工気象器利用した植物表現形質データ蓄積のための研究手法の開発」、東京、2/19/2020.
- [77] 高玉孝平、三好建正. 東京湾の霧予報に向けた予備実験 大気-海洋-河川相互作用の役割, ポスト京重点課題4研究連絡会, 神戸, 2/22/2020.

### 16.5.5 Poster Presentations

- [1] Yasumitsu Maejima, Shigenori Otsuka and Takemasa Miyoshi Assimilating every 30-second phased array weather radar data in a torrential rainfall event on July 6, 2018 around Kobe city, JPGU2019, Chiba, Japan, 5/28/2019.
- [2] Honda, T., G.-Y. Lien, T. Miyoshi, Near-real-time SCALE-LETKF forecasts of the record breaking rainfall in Japan in July 2018, JPGU2019, Chiba, Japan, 5/29/2019.
- [3] Taylor, J., LienG.Y., Satoh, S., Miyoshi, T. Impact of Radar Artifacts from Phased Array Weather Radar to Short-Range Convective Forecasts, JPGU2019, Chiba, Japan, 5/29/2019.
- [4] Kotsuki S., Kurosawa K., Kanemaru K., Terasaki K. and Miyoshi T.: A New Evaluation Method for Cloud Microphysics Schemes Using GPM Dual-frequency Precipitation Radar. 39th International Conference on Radar Meteorology, Nara, Japan , 9/16/2019.
- [5] Otsuka, S., M. Ohhigashi, V. P. Huynh, P. Tandeo, and T. Miyoshi, A deep-learning approach to three-dimensional precipitation nowcasting. 39th International Conference on Radar Meteorology, Poster1-87, Nara, Japan, 9/16/2019.
- [6] Taylor, J., LienG.Y., Satoh, S., Miyoshi, T. The Use of Dual Phased Array Weather Radar Observations to Short-Range Convective Forecasts, 39th International Conference on Radar Meteorology, Nara, Japan, 9/16/2019.
- [7] Maejima, Y., S. Otsuka and T. Miyoshi, Assimilating every 30-second phased array weather radar data in a torrential rainfall event on July 6, 2018 around Kobe city, 39th International Conference on Radar Meteorology, Nara, Japan, 9/16/2019.
- [8] 寺崎康児, 三好建正: NICAM-LETKFシステムを用いた平成30年7月豪雨再現性の解像度依存性について、日本気象学会秋季大会、福岡, 10/30/2019.
- [9] 三好建正, ゲリラ豪雨予測を目指した「ビッグデータ同化」の研究, 第6回「京」を中核とするHPCIシステム利用研究課題 成果報告会, 東京, 11/1/2019.
- [10] Keiichi Kondo, Takemasa Miyoshi, Non-Gaussian statistics in global atmospheric dynamics with a 10240-member ensemble Kalman filter experiment using an intermediate AGCM, AGU fall meeting 2019, San Francisco, USA, 12/10/2019.
- [11] Takemasa Miyoshi, “Local Particle Filter Implemented with Minor Modifications to the LETKF Code” , AMS 100th Annual Meeting, Boston, USA, 1/13/2020.
- [12] Taylor,J, Lien, G.Y., Satoh, S., T. Miyoshi, The use of dual phased array weather radar observations on short range convective forecasts, AMS 100th Annual Meeting, Boston, USA, 1/15/2020.
- [13] 高玉孝平, 内山雄介, 三好建正, アオコの分布予測に向けた湖の流動場シミュレーション琵琶湖とキネレット湖の事例. エンジニアリングネットワークリトリート, 和光, 1/22/2020.
- [14] 三好建正、寺崎康児、小槻俊司、本田匠、雨宮新、James Taylor、高玉孝平、前島康光、坂本英之、観測ビッグデータ同化に向けた取り組み、ポスト京重点課題4成果報告会、東京、1/31/2020.
- [15] Kotsuki S., Terasaki K., Satoh M. and Miyoshi T.: Ensemble-Based Data Assimilation of GPM/DPR Reflectivity into the Nonhydrostatic Icosahedral Atmospheric Model NICAM. 4th workshop on assimilating satellite cloud and precipitation observations for NWP, ECMWF, Reading, UK , 2/3/2020.

- [16] Honda, T., S.-C. Yang, T. Miyoshi, Assimilating all-sky Himawari-8 radiances in the heavy rainfall event on 23 August 2018 in Taiwan, 4th workshop on assimilating satellite cloud and precipitation observations for NWP, ECMWF, Reading, UK, 2/3/2020.
- [17] T. Miyoshi, S. Kotsuki, K.Kondo, R. Potthast, Local Particle Filter Implemented with Minor Modifications to the LETKF Code, 4th workshop on assimilating satellite cloud and precipitation observations for NWP, ECMWF, Reading, UK, 2/5/2020.
- [18] Koji Terasaki and Takemasa Miyoshi, Towards big data assimilation in Fugaku by accounting for the horizontal observation error correlation of satellite observations, The 2nd R-CCS International Symposium, Kobe, Japan , 2/17/2020.
- [19] Honda, T., S.-C. Yang, T. Miyoshi, Assimilating all-sky Himawari-8 radiances in the heavy rainfall event on 23 August 2018 in Taiwan, The 2nd R-CCS International Symposium, Kobe, Japan , 2/17/2020.
- [20] Amemiya, A., T. Miyoshi, and M. Shlok, Application of machine learning methods to model bias correction: Lorenz-96 model experiments, The 2nd R-CCS International Symposium, Kobe, Japan , 2/17/2020.
- [21] Shigenori Otsuka, Marimo Ohhigashi, Viet Phi Huynh, Pierre Tandeo, and Takemasa Miyoshi, A deep-learning approach to three-dimensional precipitation nowcasting, The 2nd R-CCS International Symposium, Kobe, Japan, 2/17/2020.
- [22] Taylor, J., Lien, G.Y., Satoh, S., T. Miyoshi, The use of dual phased array weather radar observations on short range convective forecasts, The 2nd R-CCS International Symposium, Kobe, Japan , 2/17/2020.
- [23] Kohei Takatama, Yusuke Uchiyama, Takemasa Miyoshi, Simulations of lake currents toward the prediction of blue-green algae – cases of Lake Biwa and Lake Kinneret - The 2nd R-CCS International Symposium, Kobe, Japan, 2/17/2020.
- [24] M. Mdini, S. Otsuka, T. Miyoshi, Precipitation Nowcasting Based on Convolutional Neural Networks, The 2nd R-CCS International Symposium, Kobe, Japan, 2/17/2020.
- [25] Ohishi, S., T. Hihara, H. Aiki, J. Ishizaka, Y. Miyazawa, M. Kachi, An LETKF-based ocean reanalysis for the Asia-Oceania region using Himawari-8 SSTs and SMOS/SMAP SSS, Ocean Sciences Meeting 2020, San Diego, USA, 2/18/2020.
- [26] Otsuka, S., T. Awazu, and T. Miyoshi, Verification of precipitation forecast by pattern recognition. WCRP/SPARC SATIO-TCS joint workshop on Stratosphere-Troposphere Dynamical Coupling in the Tropics, Kyoto, Japan, 2/22/2020.