

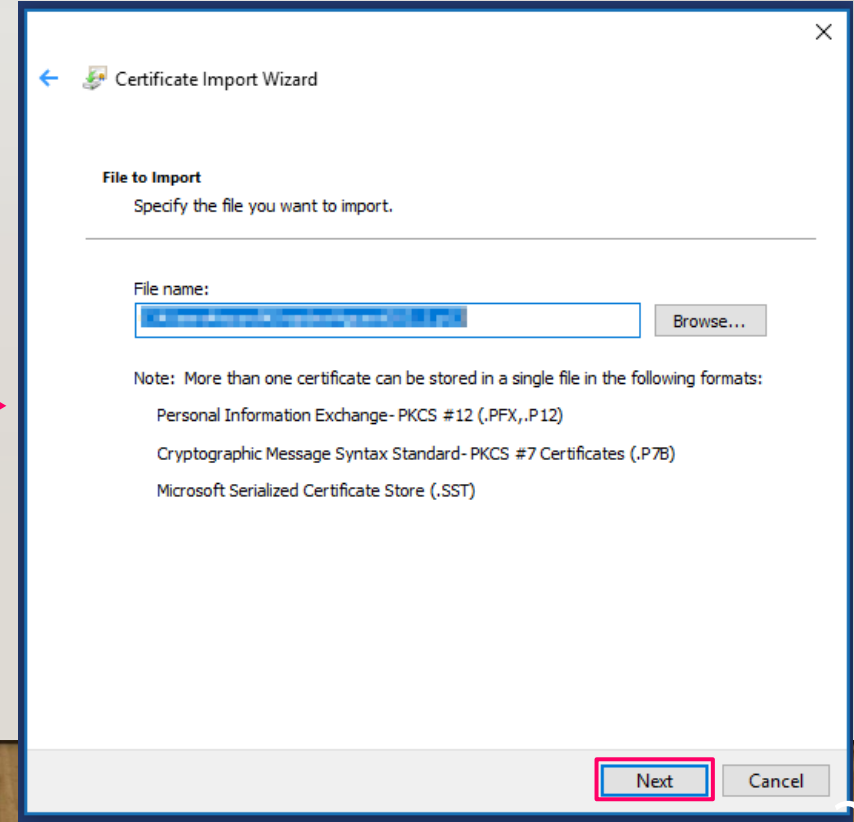
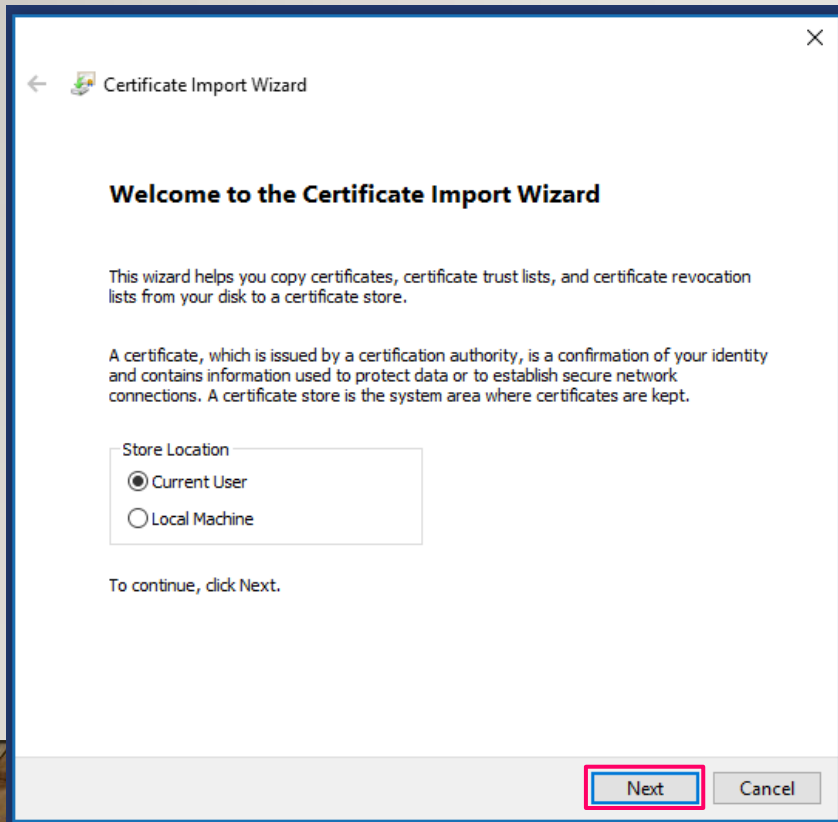
K Pre-Post Cloud VPN Installation (Windows)

RIKEN R-CCS

DECEMBER 10, 2018

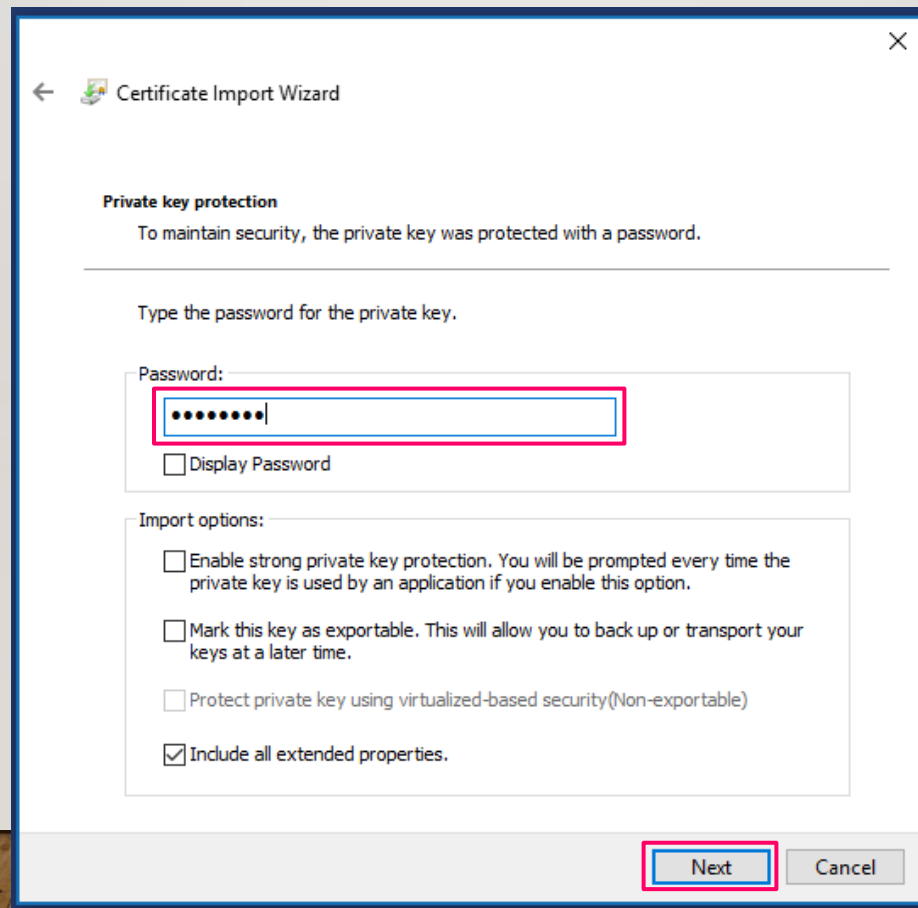
Install your Client Certificate (1/3)

- Note: Within a few days after your application, we usually send your client certificate by e-mail.
- This slide starts as you have your client certificate. If you cannot find the e-mail and your certificate, please ask us.
- Double click on the icon of your client certificate, and then the following dialog is shown.
- Press the [Next] to proceed.



Install your Client Certificate (2/3)

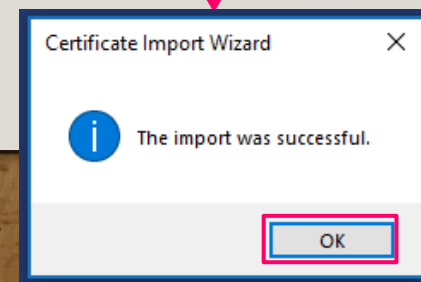
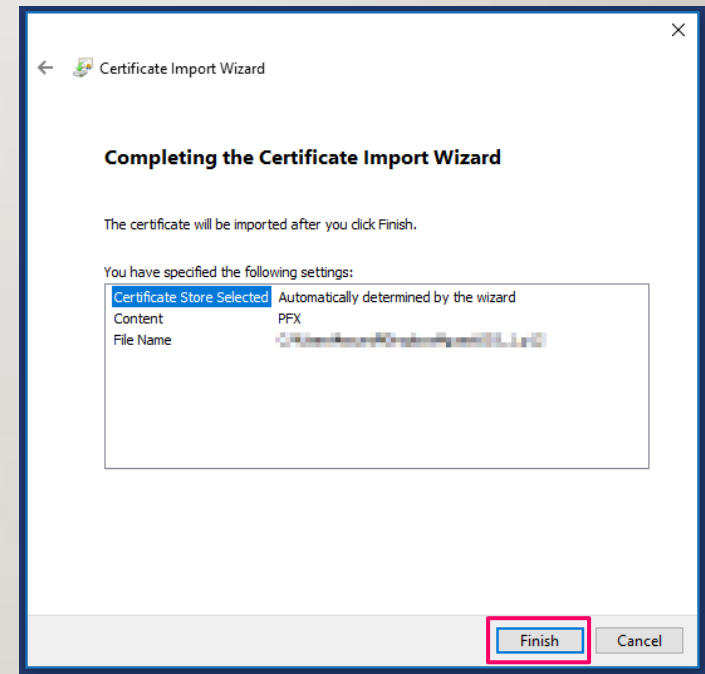
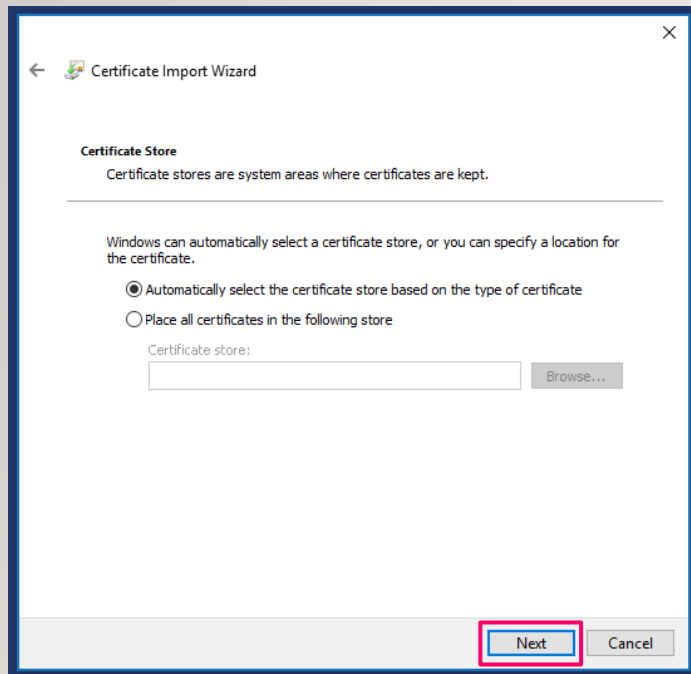
- Input your password to the [Password] field.
 - Within a few days after you received your client certificate, you may receive your password via old fashioned ways such as vis-à-vis hand delivery or mail.
- Press the [Next] button.



The screenshot shows the 'Certificate Import Wizard' dialog box. The title bar includes a back arrow, a small icon, and the text 'Certificate Import Wizard'. The main content area is titled 'Private key protection' and contains the following text: 'To maintain security, the private key was protected with a password.' Below this is a horizontal line and the instruction 'Type the password for the private key.' There is a 'Password:' label above a text input field containing ten black dots. A checkbox labeled 'Display Password' is located below the input field. Underneath is the 'Import options:' section with four checkboxes: 'Enable strong private key protection. You will be prompted every time the private key is used by an application if you enable this option.', 'Mark this key as exportable. This will allow you to back up or transport your keys at a later time.', 'Protect private key using virtualized-based security(Non-exportable)', and 'Include all extended properties.' The 'Next' button at the bottom right is highlighted with a red box.

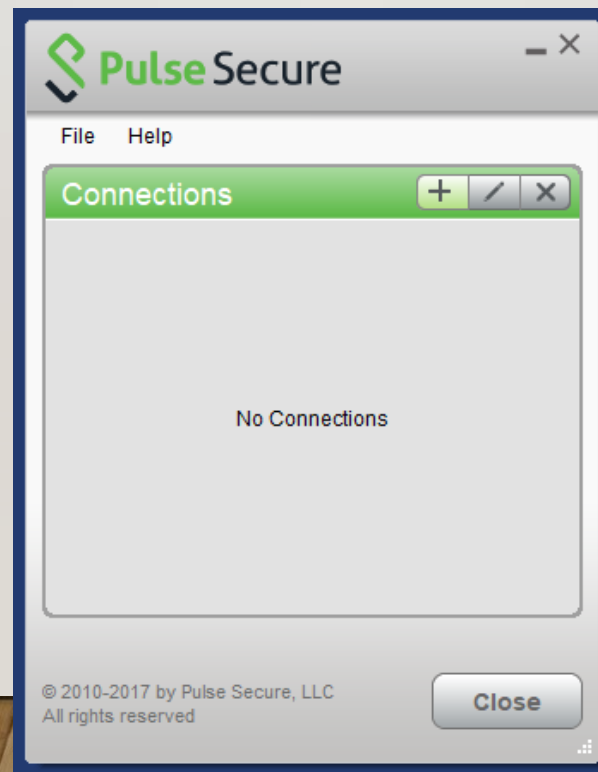
Install your Client Certificate (3/3)

- Continuously press the [Next] button to proceed.
- Press the [Finish] button.
- Finally, you see the following dialog to notice completion of your certificate import.



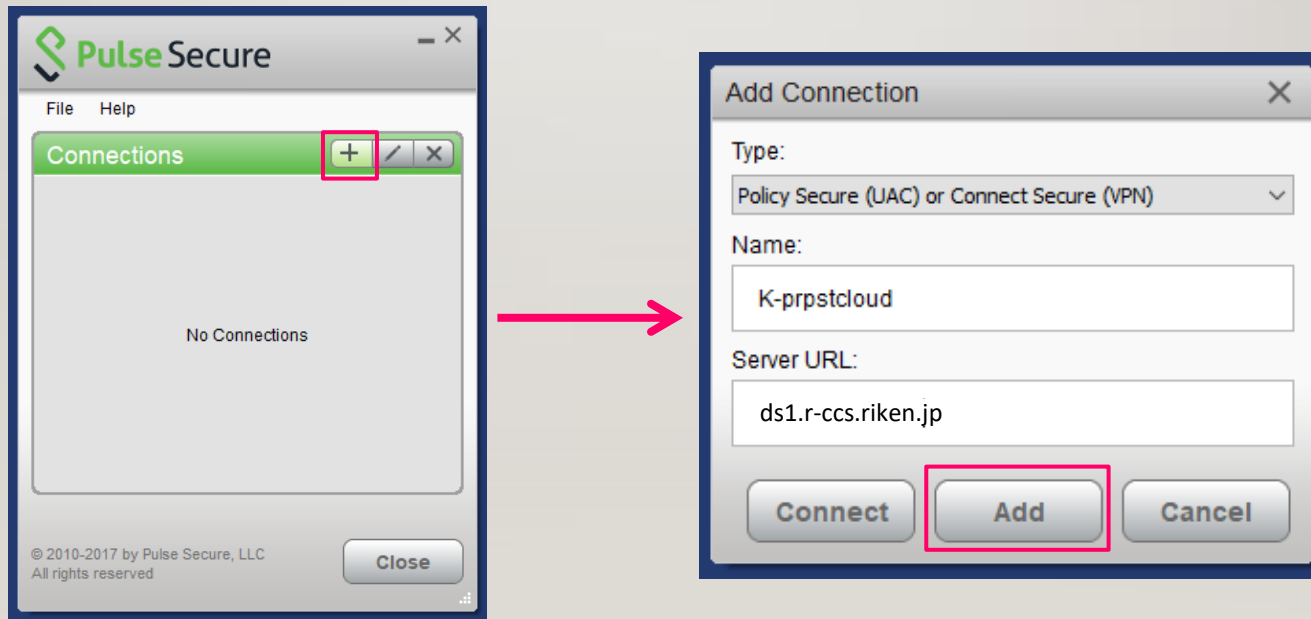
Install the VPN Client Software

- The VPN software download link has been sent to you by hand delivery or mail previously mentioned in p.3.
- Download a VPN client software depending on your environment.
 - Windows, MacOSX, Linux (32bit/64bit, rpm/deb package) are available.
- Install the VPN client software.
- After the installation, you run the software and see the following dialog.



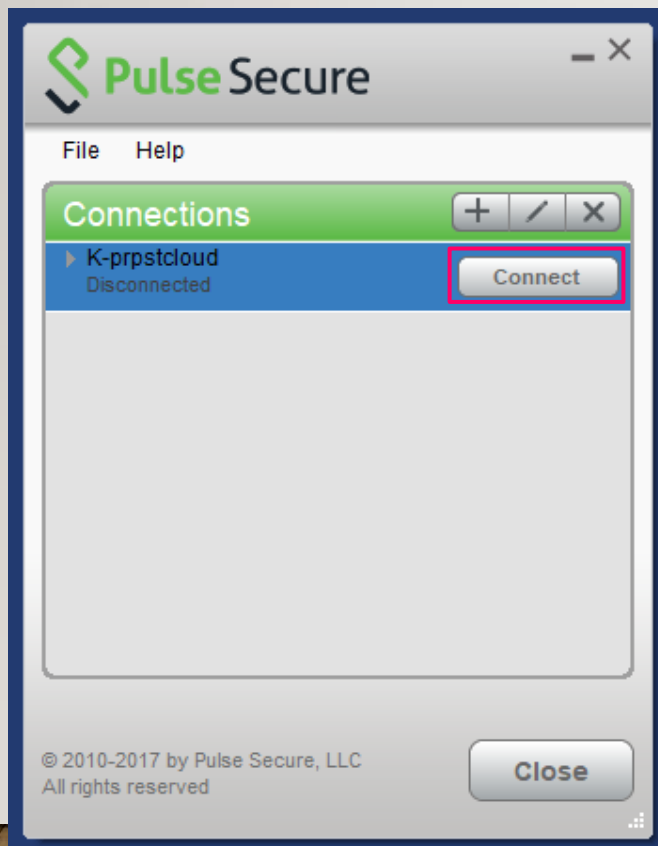
Configure the VPN Client Software (1/3)

- Press [+] button, and then you see the [Add Connection] dialog.
- Input your configuration name (arbitrary) at the [Name] text field.
- Input “ds1.r-ccs.riken.jp” at the [Server URL] text field.
- Press the [Add] button to proceed.



Configure the VPN Client Software (2/3)

- You can see the new setting you added, and then press the [Connect] button, and then the following confirmation dialog appears.
- Check the [Save settings].
- Press the [Connect] button to proceed.



Configure the VPN Client Software (3/3)

- To connect the VPN, the following dialog appears to authenticate.
- Input the [User Name] and the [Password] in the field.
 - The password is the same as the certificate import password you used in p.3.
- After completion of the authentication, you can see Connected in the status field.

